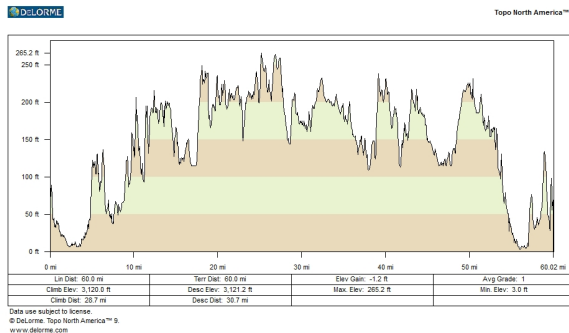


60 Miles for Dick and Roberta Bauer's 60th Birthdays, Saturday, April 28, 2012

We're celebrating Dick and Roberta's May birthdays with a ride using as many of the rail trails of Boston's northwest suburbs as we can. From their home, we bike a few blocks to the Somerville Community Path and follow the Mass. Central Railroad right-of-way across Somerville and Cambridge, continuing parallel to unimproved right-of-way through Belmont, Waltham, Weston, Wayland, and Sudbury to the Bruce Freeman Trail's future route, which we follow north until it becomes reality in Westford and Chelmsford. Then we head home, picking up the Narrow Gauge Trail in Billerica, the Minuteman Bikeway through Bedford, Lexington, and Arlington, and the new Alewife Brook Greenway back to Somerville.

<u>Miles</u>	<u>Action</u>
0.0	Dick and Roberta Bauer's house
0.0	left on Berkeley St.
0.1	Right on Central St.
0.3	Left into parking lot
0.4	Through Somerville Junction Park
0.6	Right on Lowell St.
0.6	Left on Alpine St.
0.8	Right on Cedar St.
0.8	Left on Community Path
1.3	Straight through bus terminal
1.4	Left on College Ave.
1.5	Right on Holland St. through Davis Square
1.6	Left on Buena Vista Rd.
1.7	Right on Community Path/Linear Park
2.0	Cross Mass. Ave.
2.2	Cross Harvey St.
2.5	Right toward Alewife Station
2.6	Left after going under Alewife Brook Parkway
2.7	Right on Cambridge Park Drive
3.1	Right toward bike path
3.2	Left on Fitchburg Cutoff Bike Path
3.7	Left on Brighton St.
3.7	Right on Hittinger St. past Belmont High School
4.2	Right on Concord Ave.
4.6	Straight on Royal Rd.
4.9	Right on Clark St. over train tracks
5.0	Left on Pleasant St. (MA 60)
5.7	Right on Trapelo Rd.
6.0	Left on Waverley Oaks Rd. (MA 60)
7.7	Right on Main St. (US 20)
8.0	Right on Lyman St.
8.1	Left on School St.
8.9	Right on Hammond St.
9.0	Left on Elson Rd. at Mass. Central station
9.2	Left on Prospect Hill Rd.
9.4	Right on Main St. (MA 117)
10.1	Cross I-95 (MA 128)

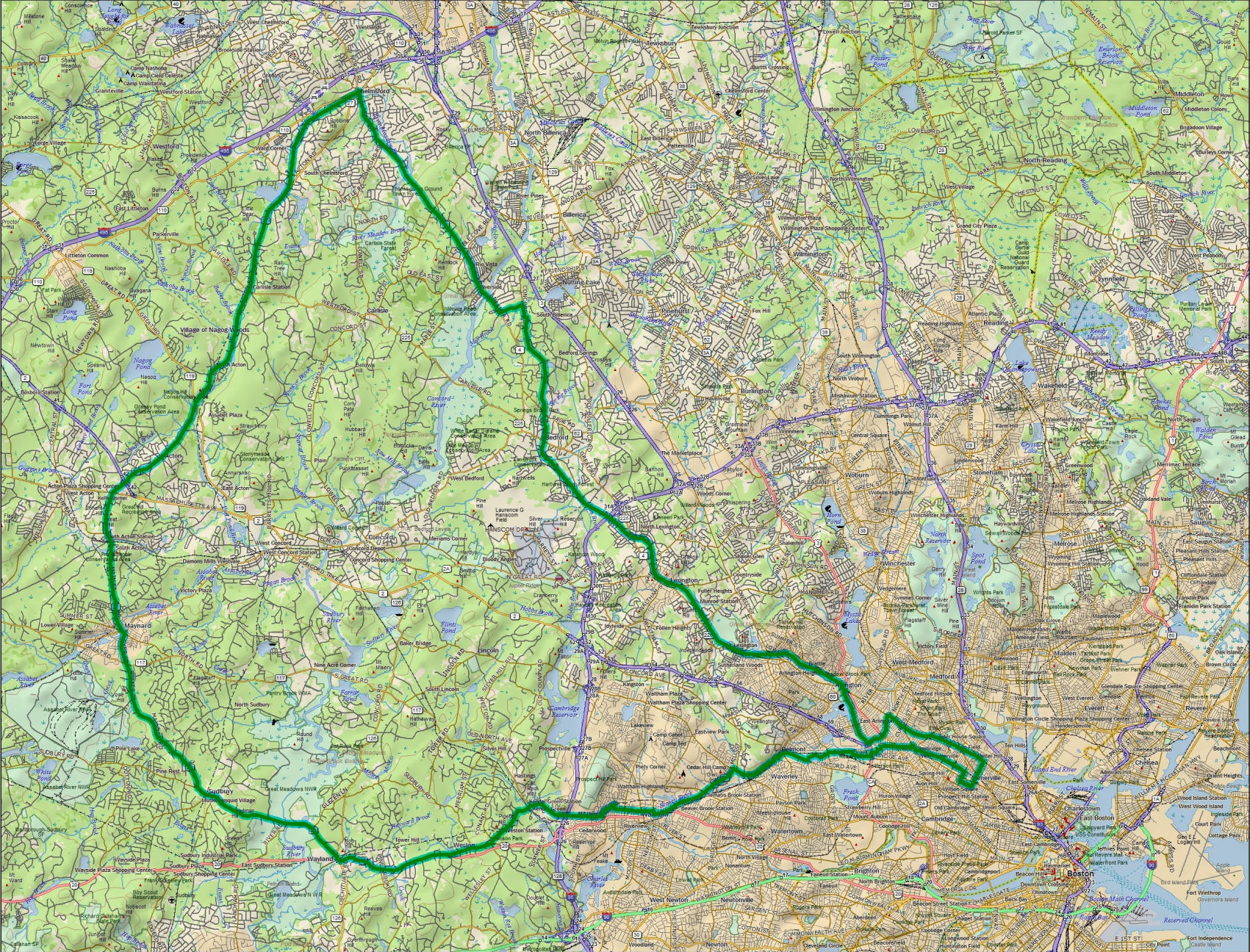
<u>Miles</u>	<u>Action</u>
11.0	Left on Church St.
11.9	Cross Mass. Central right-of-way; see station
12.2	Right on Boston Post Rd.
13.1	Bear right on Boston Post Rd. (US 20)
15.6	Right on MA 27
15.7	Left on Old Sudbury Rd. (MA 27)
18.8	Sudbury Center
19.1	Bear Right on Maynard Rd. (MA 27)
21.3	Straight on Parker Rd. (MA 27) in Maynard
23.0	Left on Waltham St. (MA 27)
23.1	Bear Right on Acton St. (MA 27)
23.4	Bear Right on Brown St. (MA 27)
24.1	Straight on Main St. (MA 27) in Acton
25.0	Cross tracks in South Acton
26.1	Straight across Mass. Ave. (MA 111)
26.4	Straight across Route 2
27.4	Straight through Acton Center
31.5	Right on Carlisle Rd. (MA 225)
31.5	Left on Bruce Freeman Trail
36.5	Right on Boston Rd. (MA 4)
37.7	Bear Left on Boston Rd. (MA 4)
41.7	Cross Concord River
42.2	Left on Dudley Rd.
42.7	Right on Concord Rd.
43.0	Left on Spring St.
43.1	Right on Narrow Gauge Trail
46.1	Cross Loomis St. to Minuteman Trail
48.1	Cross I-95
48.7	Cross Bedford St. (MA 4/225)
49.8	Pass Lexington Center
51.3	Go under Maple St. (MA 2A)
54.7	Arlington Center
56.1	Left on Alewife Brook Greenway
57.0	Right on Broadway
59.2	Right on School St.
59.9	Right on Berkeley St.
60.0	End at Dick and Roberta Bauer's house



60 Miles for Dick and Roberta Bauer's 60th Birthdays, Saturday, April 28, 2012



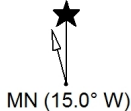
Topo North America™ 9



Data use subject to license.

© DeLorme. Topo North America™ 9.

www.delorme.com



Data Zoom 11-2